

The background is a watercolor-style wash of colors. It features a mix of various shades of green, from dark forest green to light lime green, and a bright yellow on the right side. The edges are soft and blended, creating a textured, artistic feel.

# YOKOHAMA-SXIP 2024

## Visiting IIT-Kanpur





IIT-Kanpur 2024





【IITK図書館】 IIT-Kanpur 2024





【アグラ城塞】 IIT-Kanpur 2024





IIT-Kanpur 2024













【タージマハル】 IIT-Kanpur 2024









【交換留学生との集合写真】 IIT-Kanpur 2024



The background of the slide is a vibrant blue watercolor wash. The color transitions from a deep, dark blue on the left to a lighter, sky-blue on the right. The watercolor effect is characterized by soft, irregular edges and subtle variations in tone, creating a textured, artistic feel.

# YOKOHAMA-SXIP 2024 Visiting Griffith University









Griffith University 2024





Griffith University 2024





Griffith University 2024





**Green Hydrogen:  
Japan-Australia  
Collaboration**

**YOKOHAMA-SXIP 2024**

Ayaka Ueno, Kanon Tokoyoda

The slide features a stylized illustration of an offshore oil or gas rig in the ocean under a blue sky with a full moon. The background of the slide is a light blue gradient.



The slide compares Japan and Australia in the context of green hydrogen. It features a world map with the Japanese flag and the Australian flag. The content is organized into four boxes:

- High technology** (Japan):
  - 1st in the hydrogen patent awards (2010-2020) ranking
  - has some pioneer companies
- Limited domestic energy** (Japan):
  - limited lands & many natural disasters
- Abundant resources** (Australia):
  - a high potential exporter
  - the high percentage of renewable energy
- More skill needed** (Australia):
  - aiming to reduce the price of green hydrogen
  - unstable domestic demand
  - preventing investors from investing































The background features a watercolor-style wash of colors, primarily in shades of purple, magenta, and red, with some darker, more saturated areas. The colors blend together, creating a soft, artistic texture. The text is centered over this background.

# YOKOHAMA-SXIP 2024

## Visiting Panjab University





Panjab University 2024









Panjab University 2024

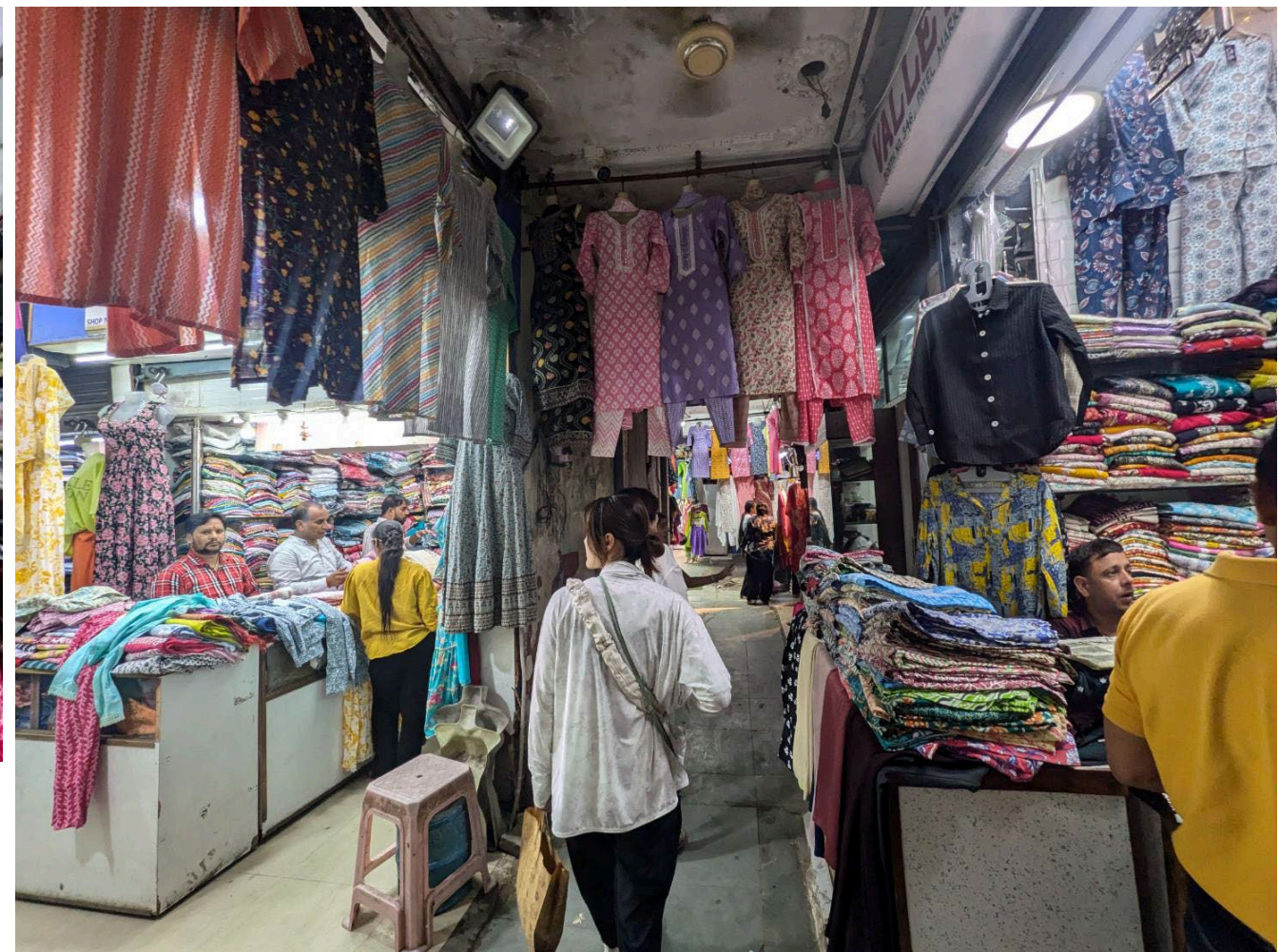








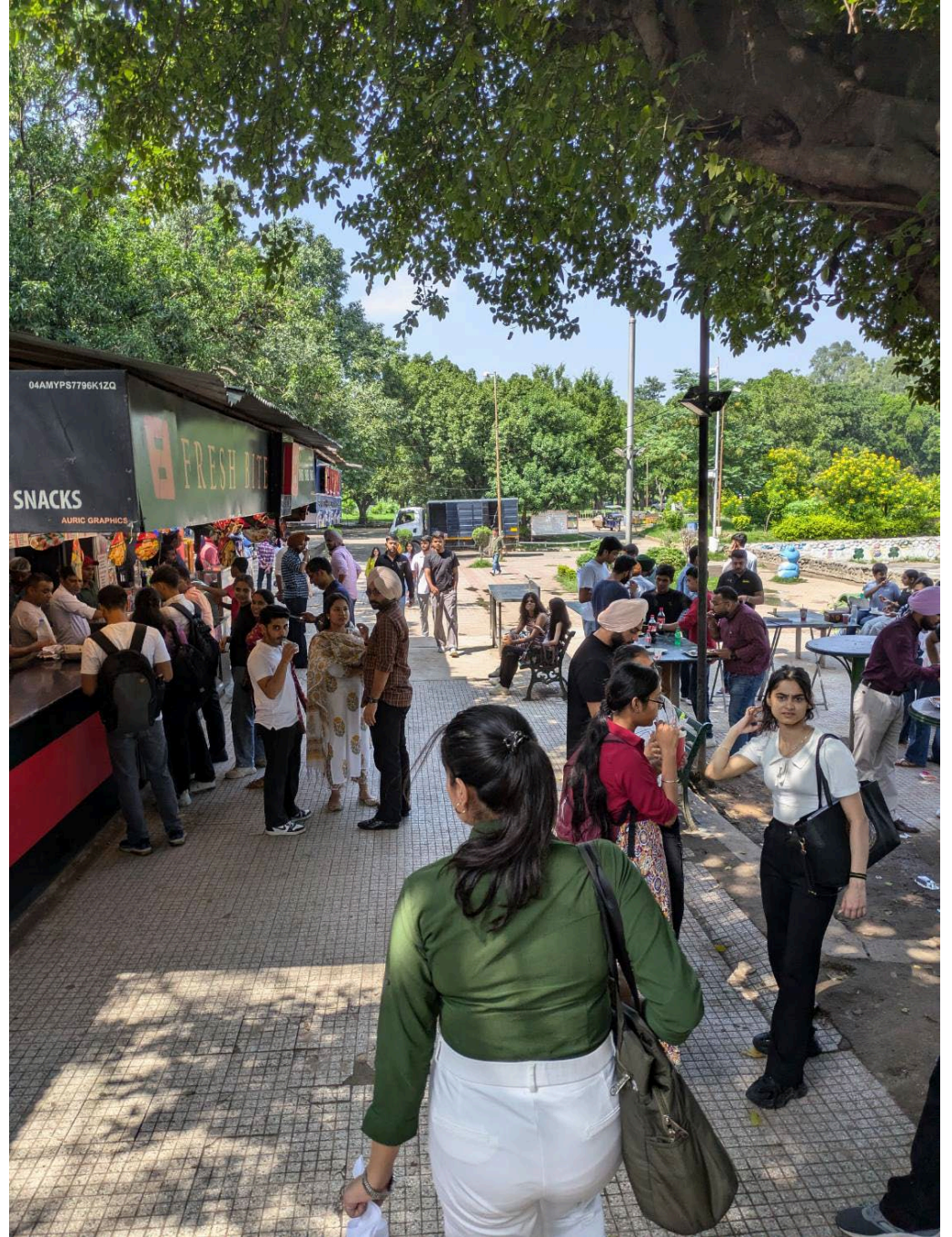












Panjab University 2024















The background of the slide is a teal watercolor wash. It features a dark teal area on the left and a lighter teal area on the right, with irregular, organic edges that blend into each other. The overall effect is soft and artistic.

# YOKOHAMA-SXIP 2024

## Visiting VIT

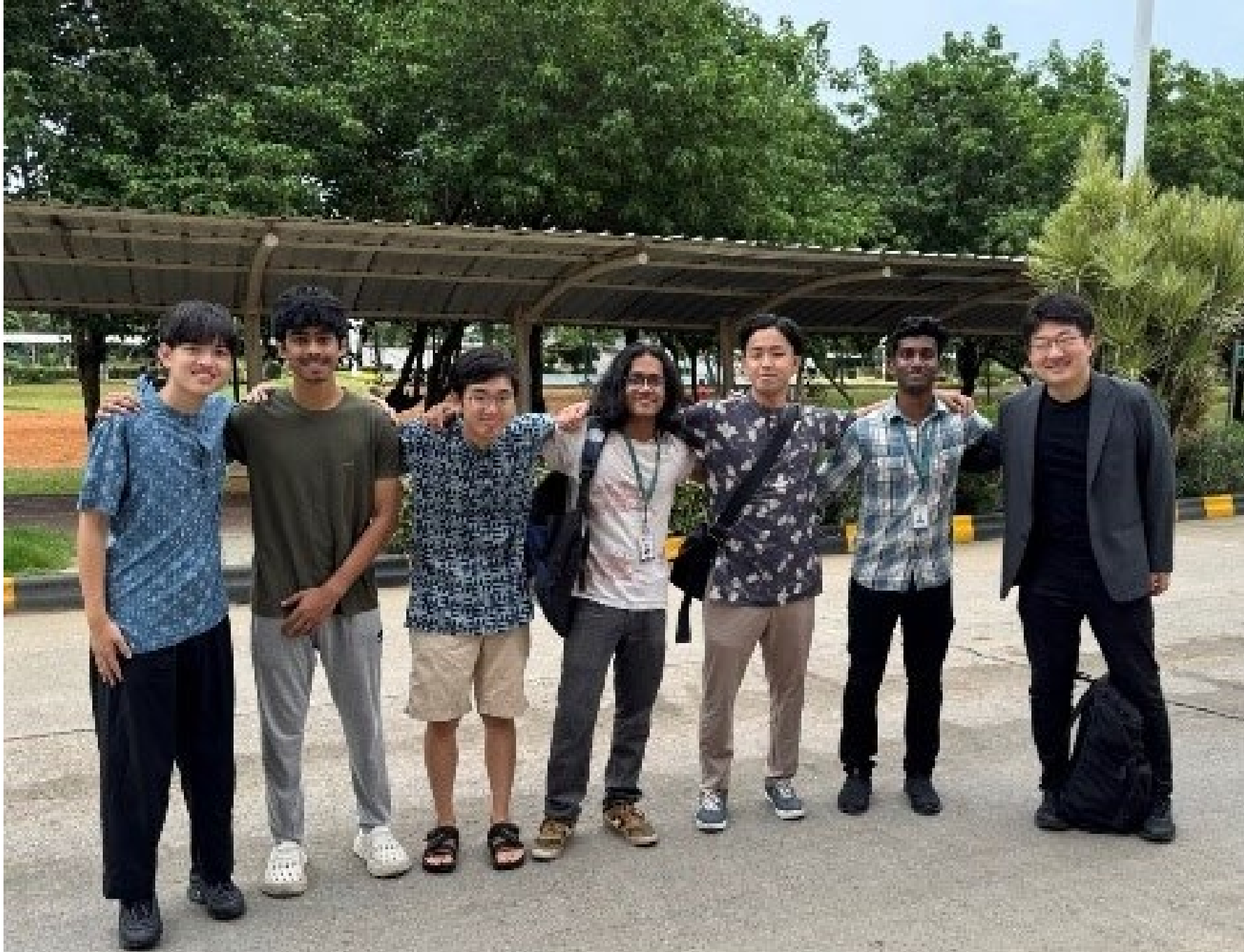












VIT 2024









VIT 2024





























VIT 2024











The background features a watercolor-style wash of colors. On the left, there are shades of teal and green, which transition into a bright yellow on the right side. The edges of the colors are soft and blended, creating a textured, artistic effect.

# YOKOHAMA-SXIP 2024

## Visiting ANNA University









Anna University 2024





Anna University 2024





Anna University 2024





Anna University 2024





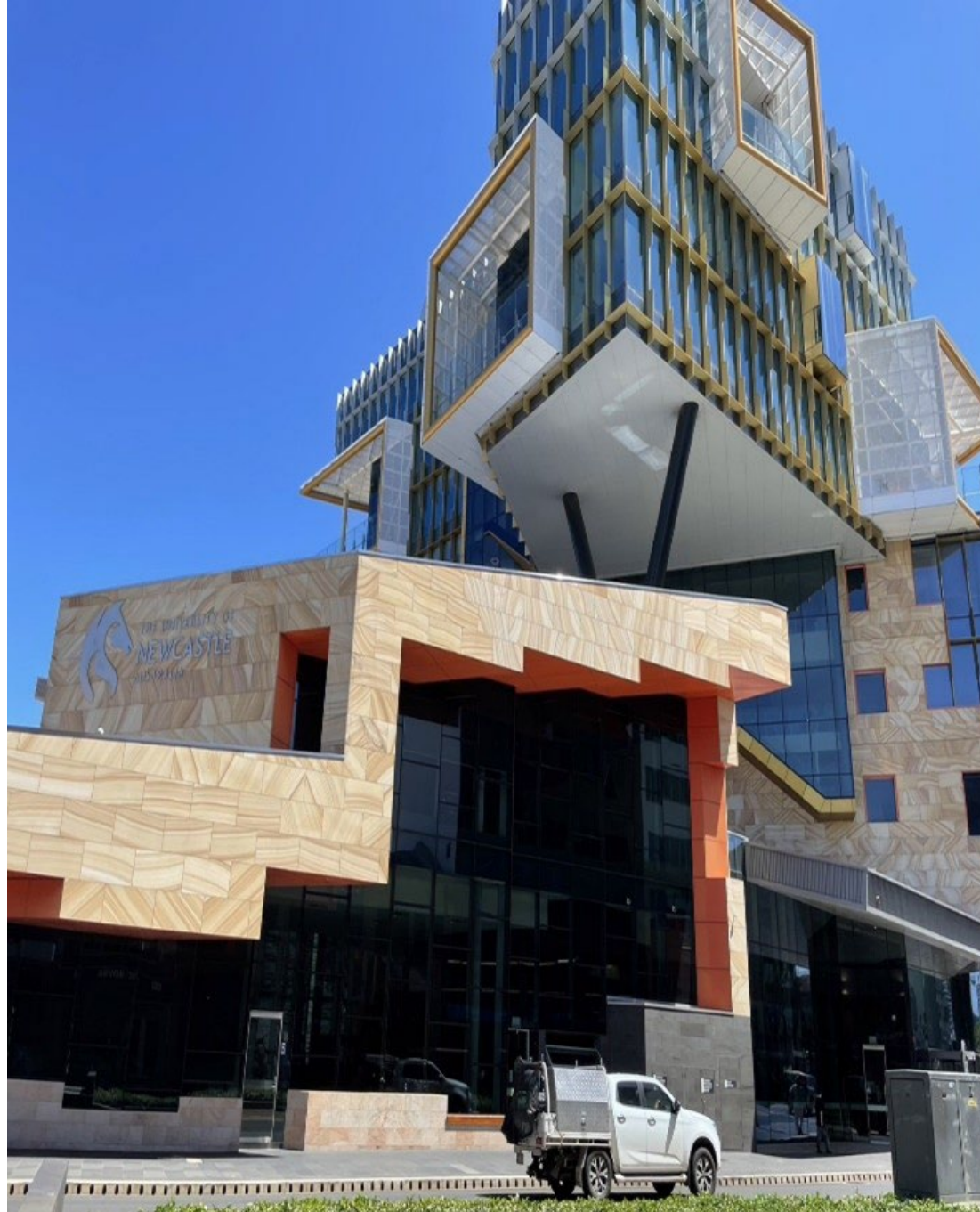


The background features a watercolor-style wash of colors. On the left, there are deep blue and purple tones, which transition into lighter, more ethereal shades of blue and pink towards the right. The overall effect is soft and artistic.

# YOKOHAMA-SXIP 2024

## Visiting the University of Newcastle





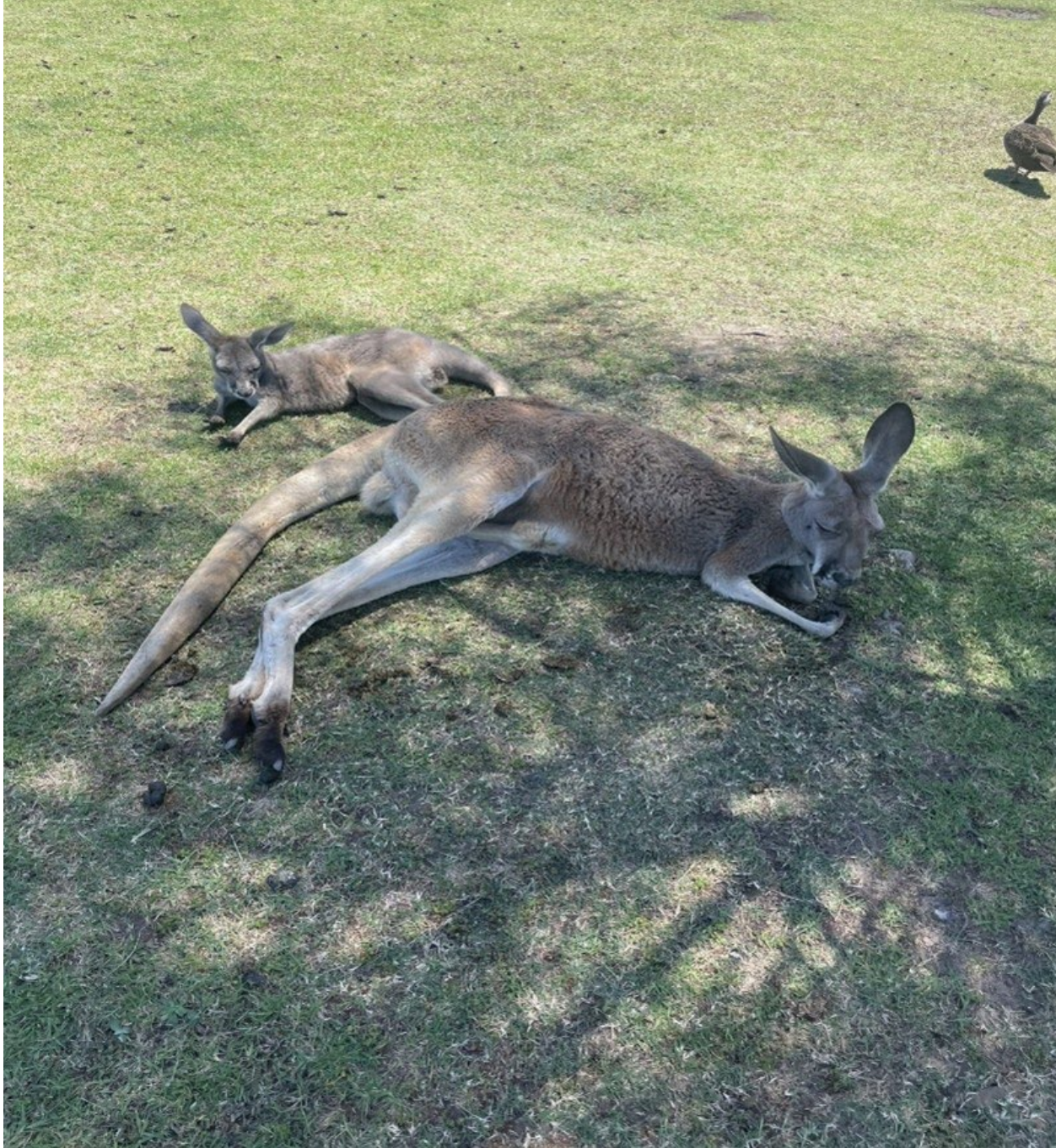
The University of Newcastle 2024





The University of Newcastle 2024





The University of Newcastle 2024





The University of Newcastle 2024





The University of Newcastle 2024